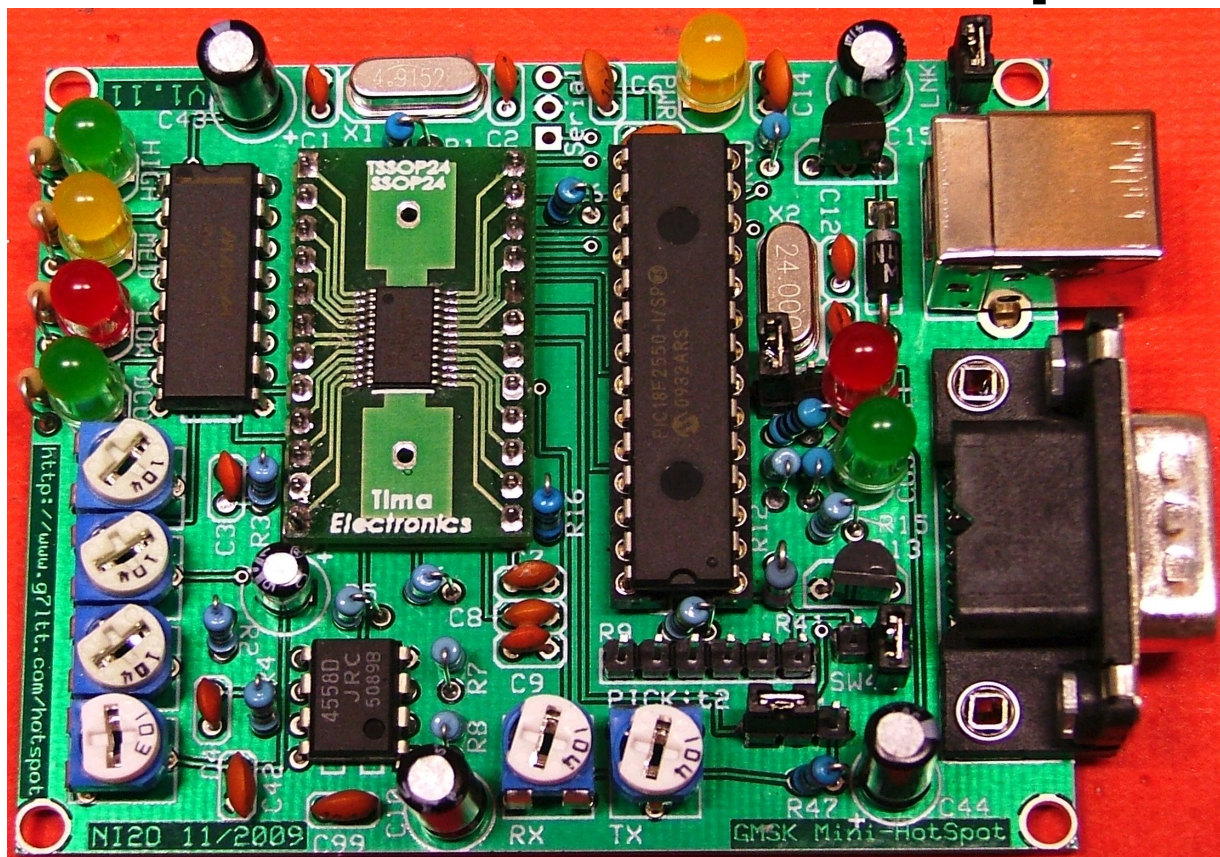
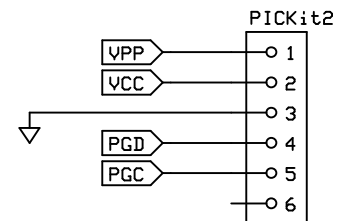
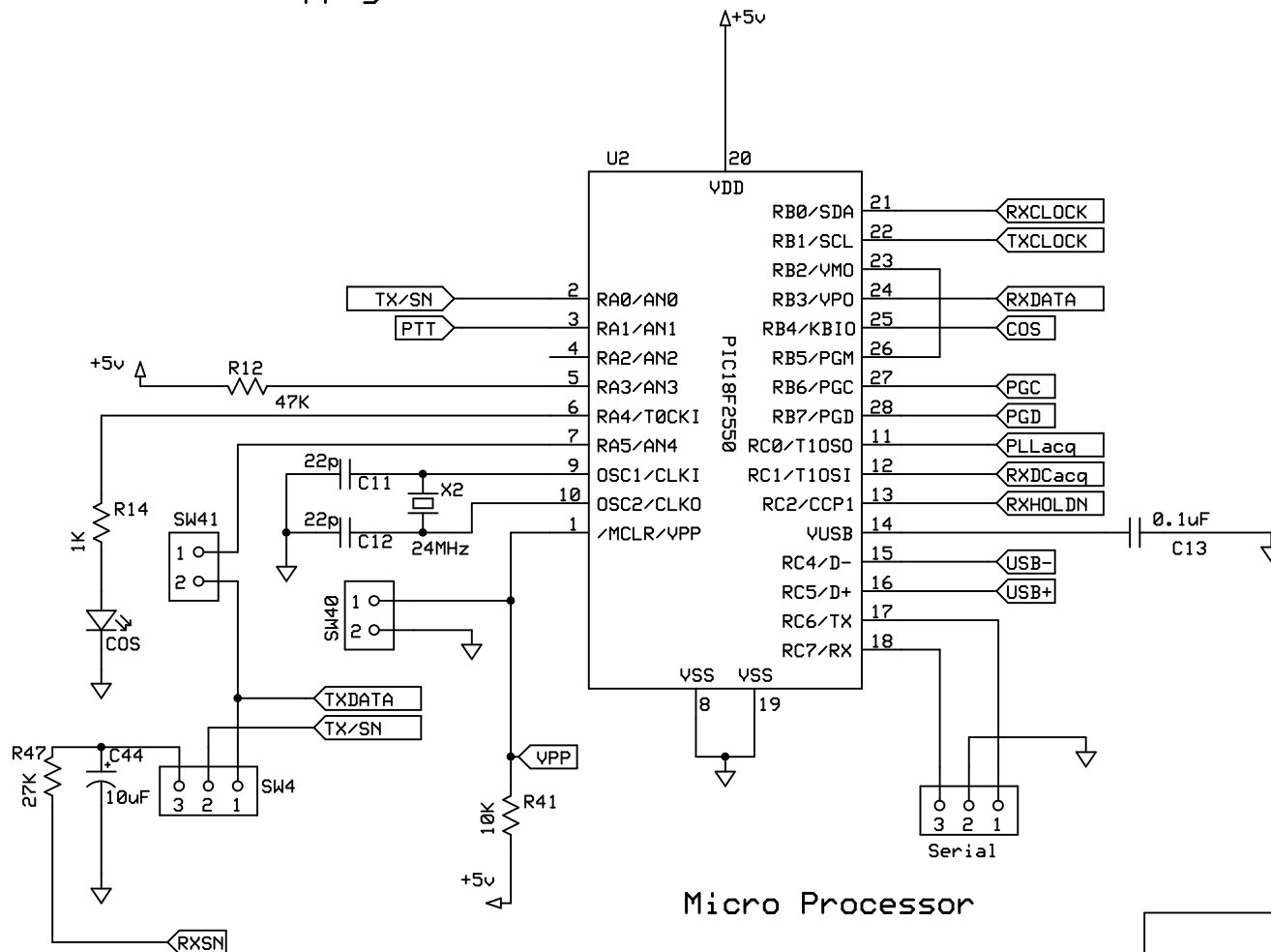
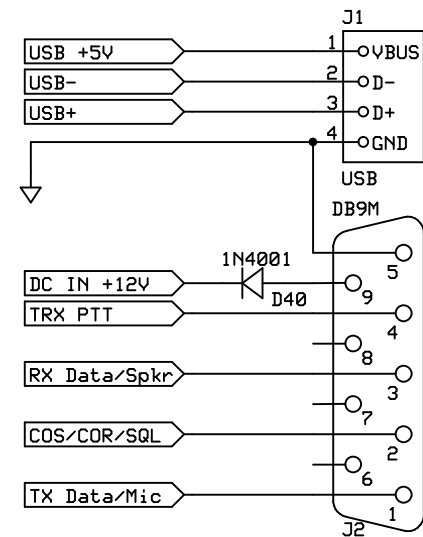
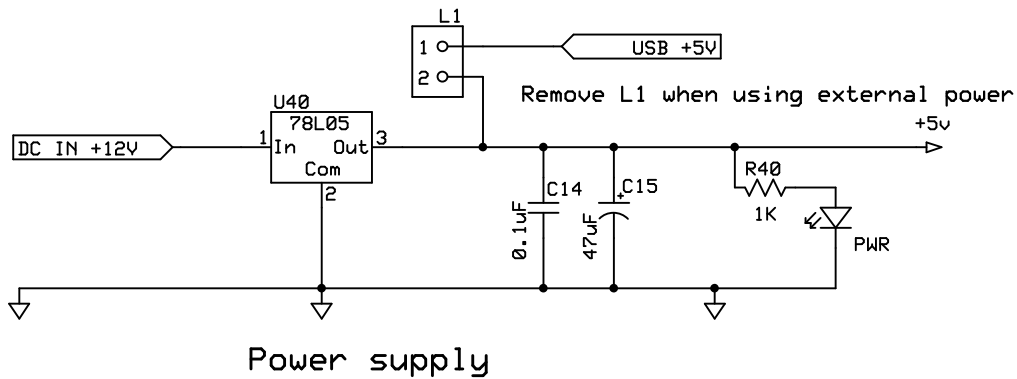


# Not Quite So Mini-HotSpot

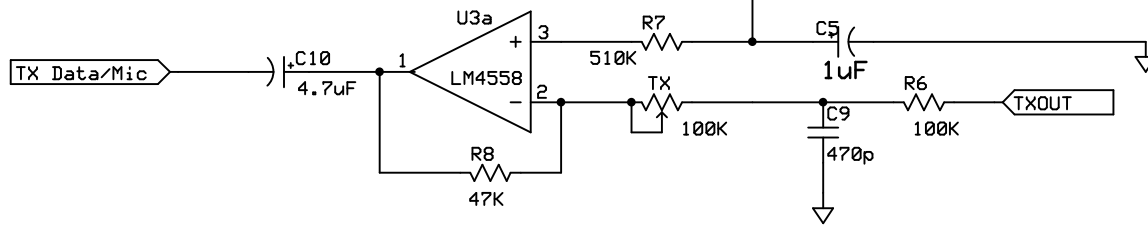
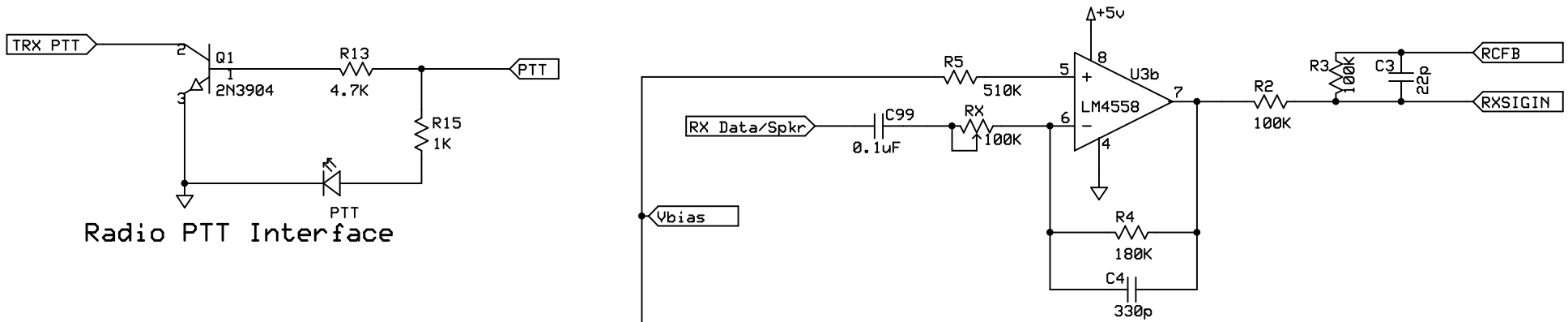


Schematic Diagram and notes for Version V1.11

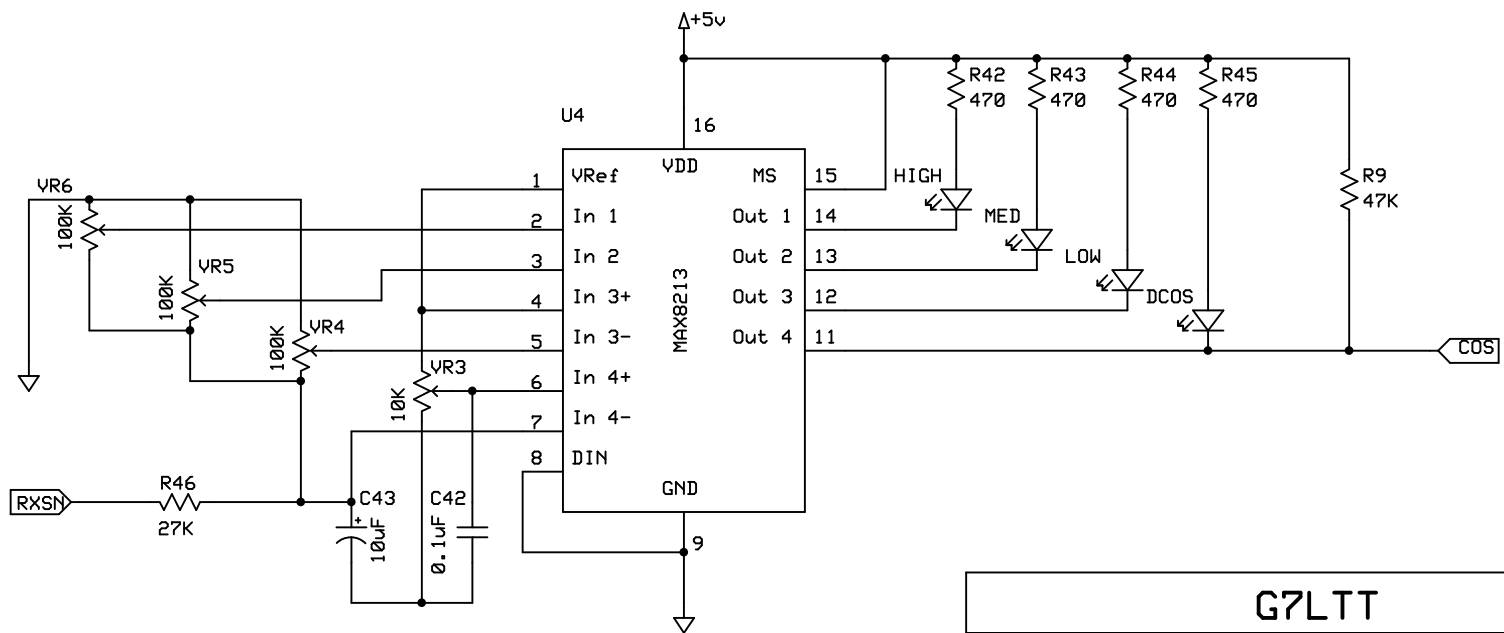
Mark A Phillips G7LTT/NI20  
<http://www.g7ltt.com/hotspot>



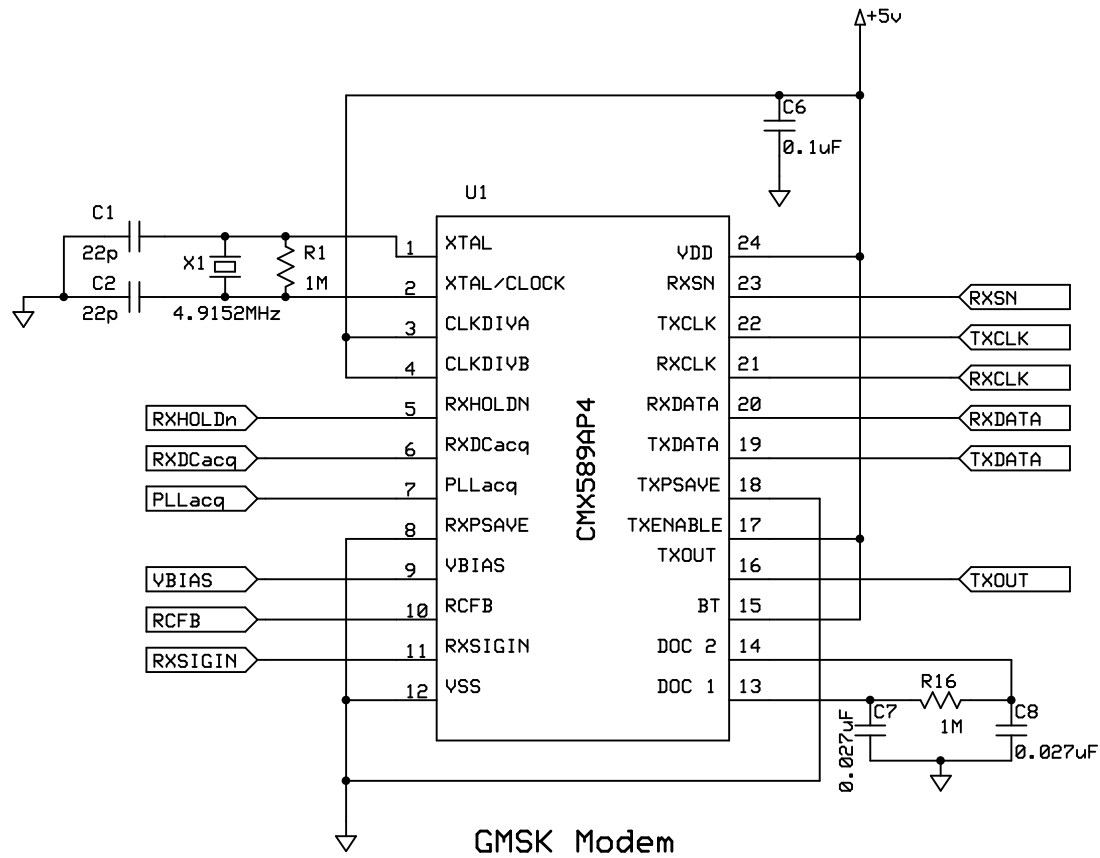
USB boot loader enable SW40 closed. Remove for normal operation  
 V4.xx firmware SW4 1-2, SW41 open  
 V5.xx firmware SW4 2-3, SW41 closed

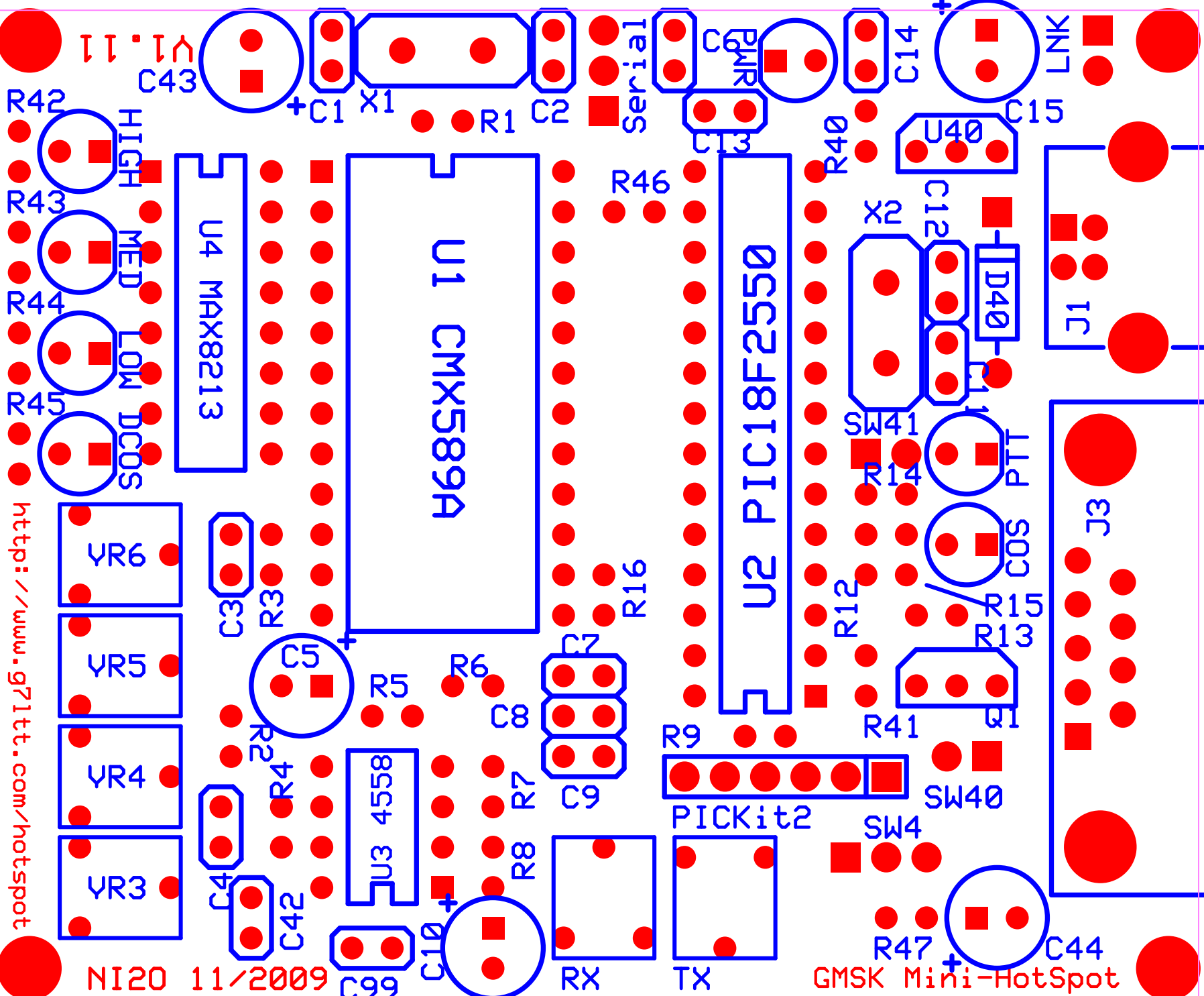


Radio Analog Processor



Digital COS





## G7LTT Not Quite So Mini-HotSpot

### Parts List

C1,C2, C3, C11, C12	22p	(22)
C4	330p	(331)
C5	1uF	
C6, C13, C14, C42, C99	0.1uF	(104)
C7, C8	0.027uF	(273)
C9	470p	(471)
C10	4.7uF	
C15	47uF	
C43, C44	10uF	
COS, HIGH, DCOS	Green LED	
PTT, LOW	Red LED	
PWR, MED	Amber LED	
D40	1N4001	
TX, RX, VR4, VR5, VR6	100K	(104)
VR3	10K	(103)
J1	USB "B"	
J2	DB9M	
L1, SW40, SW41	2 pin header	
PICKit2	6 pin header	
SW4, Serial	3 pin header	
R1, R16	1M	(Brown/Black/Black/Yellow/Brown)
R2,R3, R6	100K	(Brown/Black/Black/Orange/Brown)
R4	180K	(Brown/Grey/Black/Orange/Brown)
R5, R7	510K	(Green/Brown/Black/Orange/Brown)
R8, R9, R12	47K	(Yellow/Purple/Black/Red/brown)
R13	4.7K	(Yellow/Purple/Black/Brown/Brown)
R14, R15, R40	1K	(Brown/Black/Black/Brown/Brown)
R46, R47	27K	(Red/Purple/Black/Red/Brown)
R42, R43, R44, R45	470R	(Yellow/Purple/Brown)
R41	10K	(Brown/Black/Black/Red/Brown)
U1	CMX589AP4	
U2	PIC18F2550	
U40	78L05	
U3	LM4558	
U4	MAX8213	
Q1	2N3904	
X1	4.9152MHz	
X2	24MHz	
PCB1	NQSMHS V1.11 PCB	
U2-S	28 pin IC socket	
Card1	Business card with URL's etc	